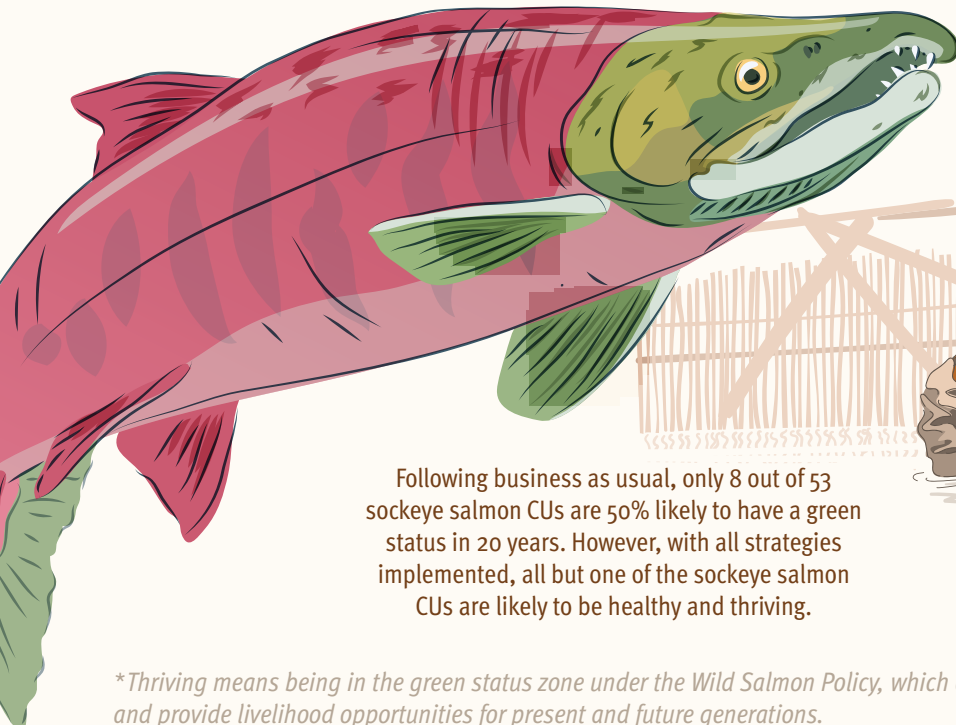
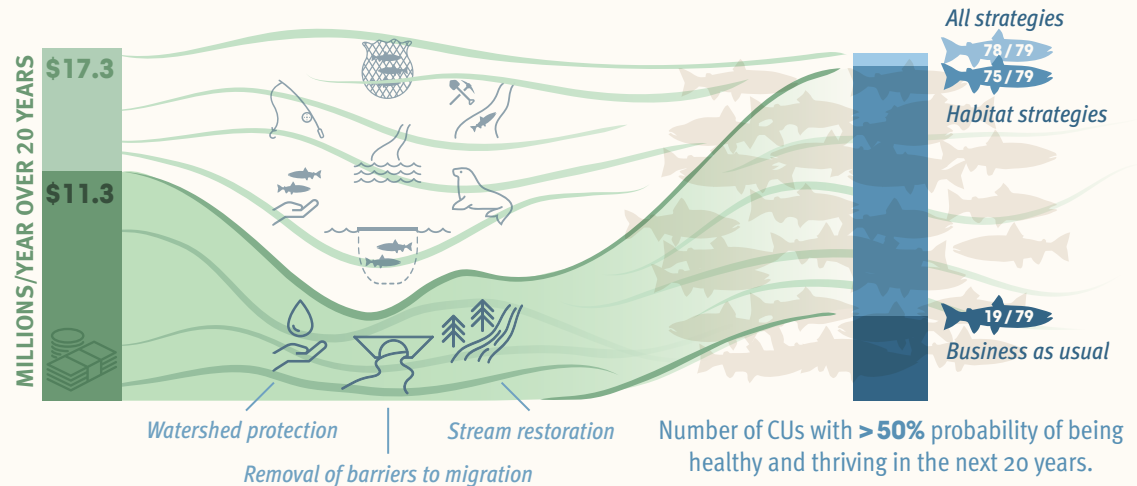
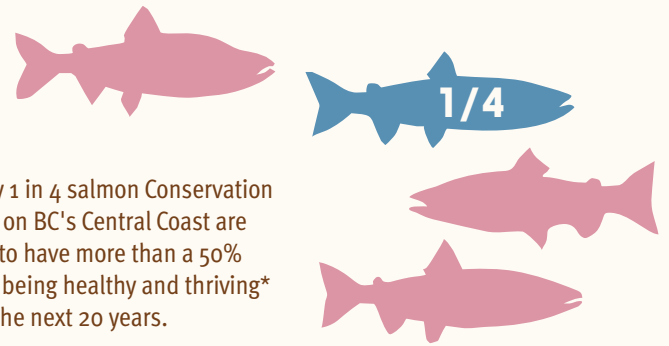


# Prioritizing Strategies for Pacific Salmon Recovery and Persistence on the BC Central Coast

The overall outlook for Central Coast salmon could be improved if additional strategic investments are made. Using a structured expert elicitation process with First Nations, federal and provincial resource managers, and researchers, we identified ten key conservation strategies for potential investment.

Implementing 3 of the habitat strategies would achieve similar benefits to implementing all 10, for less cost.

Currently, only 1 in 4 salmon Conservation Units (CUs) on BC's Central Coast are estimated to have more than a 50% probability of being healthy and thriving\* in the next 20 years.



Proactively safeguarding salmon habitat by limiting industrial development in critical areas is more cost-effective than restoring habitat after it becomes degraded.

Following business as usual, only 8 out of 53 sockeye salmon CUs are 50% likely to have a green status in 20 years. However, with all strategies implemented, all but one of the sockeye salmon CUs are likely to be healthy and thriving.

Independent of the management strategies, an additional \$0.7 million per year is needed to conduct monitoring and assessment.

\*Thriving means being in the green status zone under the Wild Salmon Policy, which allows a population to fulfill its ecological function and role, and provide livelihood opportunities for present and future generations.